

Towards an integrated regulation platform in Luxembourg

—
**Information Security Education
Day**
2017 - 28th of april

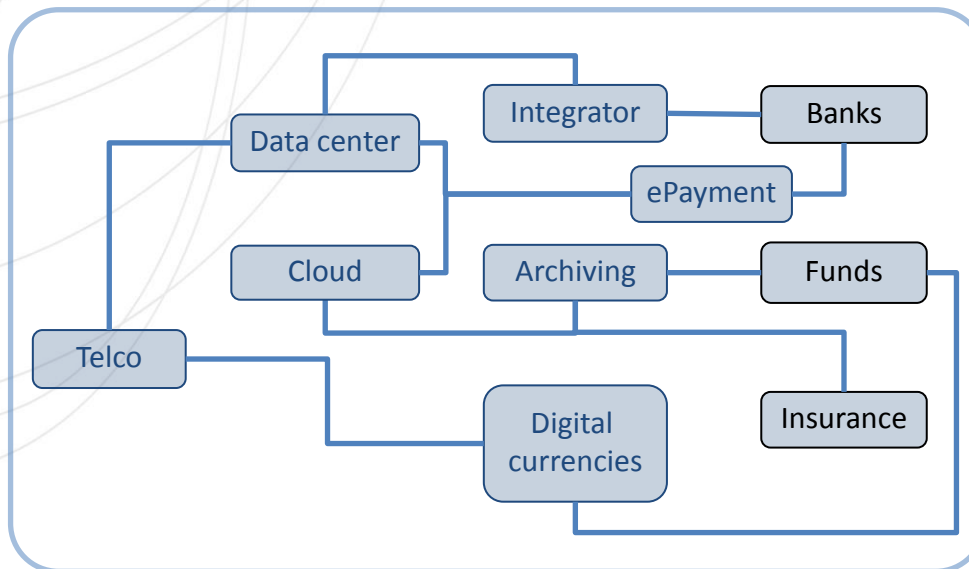


Towards an integrated regulation platform in Luxembourg

Context

A complex and inter-connected digital ecosystem contributing to all sectors

A set of regulators



Trusted Digital Ecosystem

Right trade-off between **regulation and innovation**, between **regulation and implementation costs**, **Dynamic adaptation** of the ecosystem to new risks and new legal and regulatory requirements

Towards an integrated regulation platform in Luxembourg

Origins of the story – ILR project for the Telco regulation

Regulator Data Platform

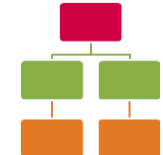
Report's list

Provider	Year	Reported?	Reported date	Reported
Blue	2013	✓	2013-10-24	✓
Blue	2012	✓	2012-05-12	✓
Orange	2013	✓	2013-05-10	✓
Orange	2012	✓	2012-05-03	✓
Green	2013	✓	2013-11-10	✓
Green	2012	✓	2012-11-10	✓

Analysis &
Feedbacks

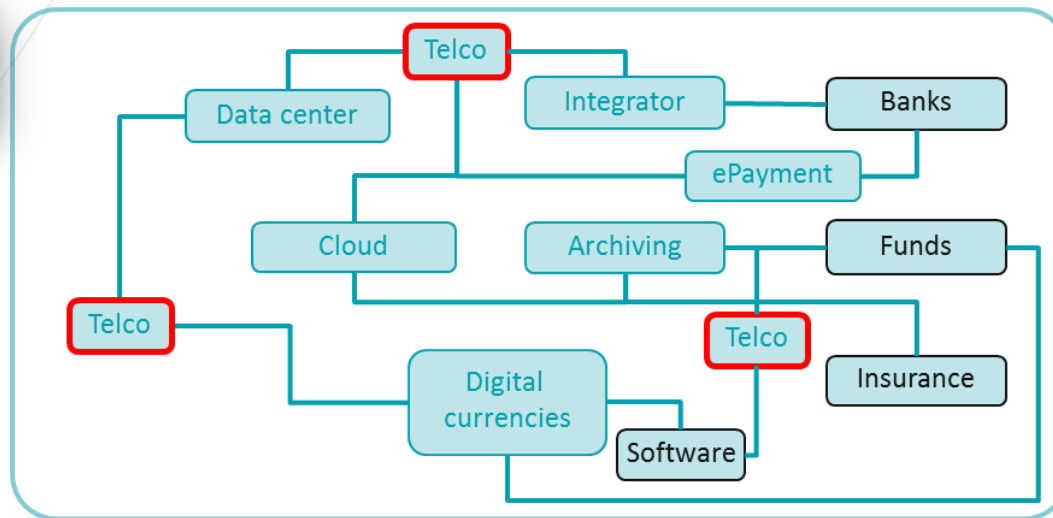


Telco Business
/Risks/Compliance
Models



Risk&Compliance
Management **Tool**
(TISRIM)

Risk Management
Training



Towards an integrated regulation platform in Luxembourg

Origins of the story – ILR project for the Telco regulation

MEMORIAL
Journal Officiel
du Grand-Duché de
Luxembourg



MEMORIAL
Amtsblatt
des Großherzogtums
Luxembourg

6287

Institut Luxembourgeois de Régulation

Règlement 15/200/ILR du 18 décembre 2015

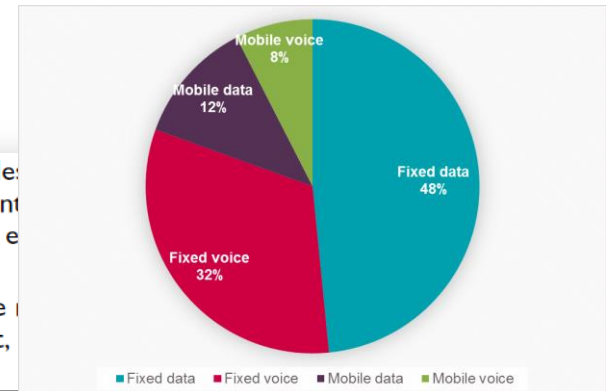
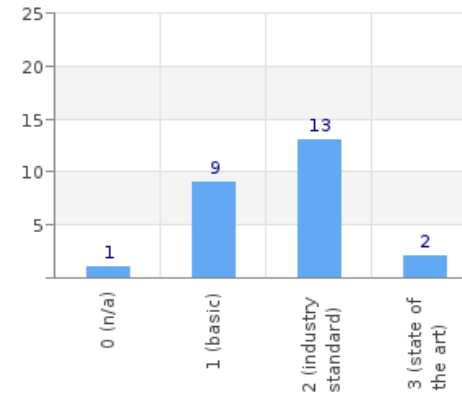
portant sur les modalités de notification des mesures de sécurité à prendre par les entreprises fournissant des réseaux de communications publics et/ou des services de communications électroniques au public dans le cadre de l'article 45 (1) et (2) de la loi du 27 février 2011 sur les réseaux et les services de communications électroniques

Arrêté grand-ducal du 16 décembre 2015 concernant la constitution d'une zone de réserves foncières à Esch-sur-Alzette

Art. 2. (1) Aux fins de la notification des mesures concernant les services voix et data sur les mobiles, l'entreprise confirme par écrit à l'Institut, en remplissant le formulaire annexé au présent règlement, effectivement mis en œuvre les mesures nécessaires pour atteindre un niveau de sécurité adapté au risque existant.

(2) Le formulaire visé à l'alinéa (1) est à compléter par un rapport généré par l'outil d'analyse de données à disposition par l'Institut, selon des modalités fixées par convention entre l'entreprise et l'Institut, rapport équivalent couvrant au moins les mesures définies à l'article 1 (2).

des réseaux de communications publics et/ou des services de communications électroniques au public dans le cadre de l'article 45 (1) et (2) de la loi du 27 février 2011 sur les réseaux et les services de communications électroniques – Secteur Communications électroniques 6287
Institut Luxembourgeois de Régulation – Règlement E15/59/ILR du 18 décembre 2015 fixant les taux de contribution au mécanisme de compensation pour l'année 2016 – Secteur Electricité 6289
Convention entre la Fédération luxembourgeoise des Laboratoires d'analyses médicales et la Caisse nationale de santé, conclue en exécution de l'article 61 et suivants du Code de la sécurité sociale – RECTIFICATIF 6289



• Sécurité physique et environnementale

• SOs couvrant ce périmètre :

- SO09: Physical security of facilities
- SO10: Security of supplies

• Risques (menaces) visant ce périmètre :

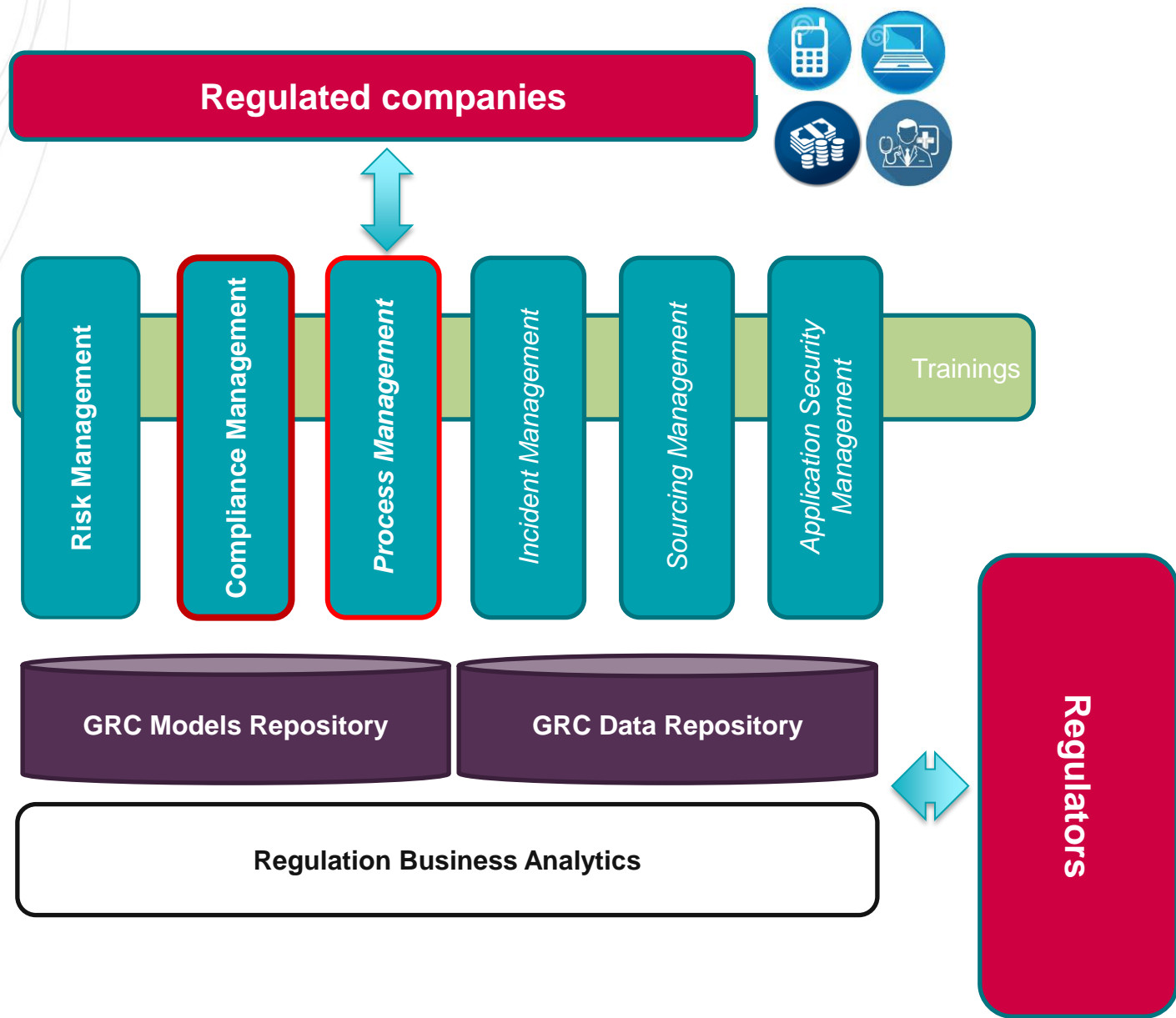
- Incendie (*Fire*)
- Dégâts des eaux (*Water damage*)
- Sinistre majeur (*Major accident*)
- Perturbations dues aux rayonnements (*Disturbance due to radiation*)
- Destruction de matériel ou de supports (*Destruction of equipment or media*)
- Catastrophe naturelle (*Natural disaster*)



Incohérence potentielle
Niveau mitigé
Cohérence

Towards an integrated regulation platform in Luxembourg

Platform



Towards an integrated regulation platform in Luxembourg

Platform



E-SERVICES
PILLAR

On-Line GRC Services

PLATFORM
PILLAR

GRC Models
Repository

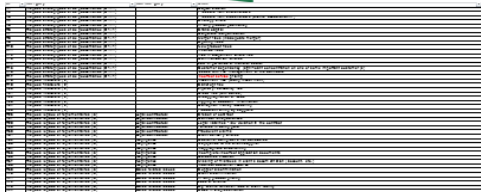
GRC Data Repository

R&D
PILLAR

Model
transformation

Regulation
Engineering

Data
Analytics



Towards an integrated regulation platform in Luxembourg

Sectoral models approach

Services

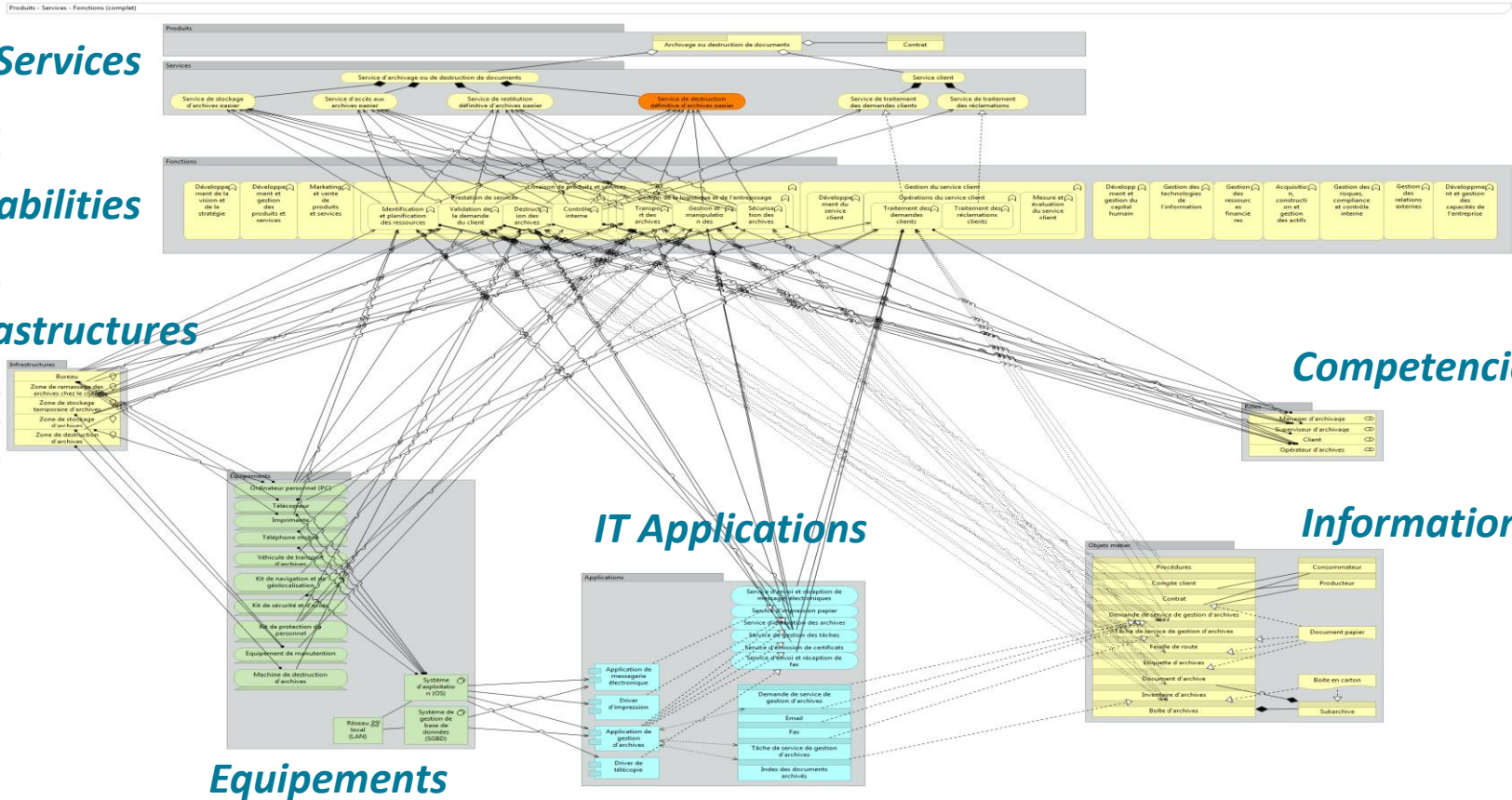
Capabilities

Infrastructures

Competencies

Informations

Equipements



Towards an integrated regulation platform in Luxembourg

How does it work ? ISO/IEC 27001 for a data center

1

Compliance Management



Specific sectoral model for data center

Questions and references – Expected results –
Notices & links to related legal requirements

2

Risk Management



Specific catalogue of risks for data center

Existing
tools

3

Process Management



Specific process model for data center

4

Dashboard & reporting



A screenshot of a detailed report interface. It shows a table with multiple columns and rows of data, likely representing a compliance audit or risk assessment report. The table includes various metrics and status indicators.

Towards an integrated regulation platform in Luxembourg

How does it work ? GDPR for an hospital

1

Compliance Management



Specific privacy sectoral model for hospital & processing activities assessment

Questions and references – Expected results – Notices & links to related legal requirements

2

Risk Management



Specific catalogue of risks for hospital

3

Process Management



Specific process model and record of processing activities for hospital

4

Dashboard & reporting



Towards an integrated regulation platform in Luxembourg

Uniqueness

- GRC & Sectoral model based approach
- Collaborative approach to produce and share a “standardized” knowledge
- Gathering different regulators on a single point of exchange
- Interoperability of tools
- Opening data analytics capabilities
- Automation of the implementation of legal requirement

Towards an integrated regulation platform in Luxembourg

Benefits

Key benefits for the regulated entities

- Facilitating exchange with regulators
- Improving the quality, agility and efficiency in the GRC activities
- Optimizing the multi-regulation reporting

Key benefits for the regulators

- Mutualizing and leveraging the new regulatory technologies adoption
- Improving the quality, agility and efficiency in the regulation activities
- Allowing benchmarking and systemic Analyses

Key benefits for the Digital Ecosystem of Luxembourg

- Branding the Luxembourg Digital Ecosystem – Trusted Hub
- Increasing the competitiveness and trust of national smart industries
- Pushing a new smart regulatory industry

Towards an integrated regulation platform in Luxembourg

Challenges

- Extension **of the scope** of our approach (models & tools) to other regulations, standards, laws...
- **Development of the data analytics** capabilities/skills and exploitation by the regulators and for the regulated entities
- Assistance of the regulators in the **model engineering** and maintenance and cross regulations models
- Development of the cross services approach : compliance vs risk, risk vs sourcing...
- ...